

BLAKE REAL ESTATE
DICKSON SERVICES

202.667.2000
www.blakedickson.com

FOR LEASE

1840 14TH ST NW
Washington, DC

THE TAYLOR MOTORS BUILDING



TROPHY RETAIL POTENTIAL

Blake Dickson Real Estate is pleased to present The Taylor Motors Building, a signature building located at the northwestern corner of 14th & T Streets, NW, a commanding and strategic location in the booming 14th Street commercial corridor.

SIZE: The Taylor Motors Building is approximately 7,700+/- square feet of retail space on the first floor. The second floor is approximately 7,500+/- SF. The third floor is approximately 7,777+/- SF, and the fourth floor is 1,482+/- SF.

THE BUZZ: The restoration of this neighborhood landmark presents an incredible opportunity for tenants looking to establish a signature presence in one of Washington's most vibrant and interesting neighborhoods. **The bustling 14th Street corridor** has added numerous retailers, art galleries, theatres and performing arts venues and restaurants over the last five years. More than 400 businesses are represented along the hot and happening 14th and U Streets corridors.

HOT NEW RETAIL: The ever-growing retail critical mass includes Whole Foods, Logan Tavern, Mercado, PNC Bank, Stoney's, Best In Spirits, Starbucks, Saint Ex Cafe, Bar Pilar, Logan Hardware, Garden District, Busboy & Poets, Studio Theatre, Urban Essentials, Universal Gear, Mitchell Gold, Rice Restaurant, Vastu, Dogs By Day, Muleh, GoMamaGo, Pulp, Home Rule, Redeem, Circle Boutique, Flowers on Fourteenth -- and more!

BLAKE DICKSON Real Estate Services • 202.667.2000
LISTING: 1840 14TH STREET NW



HISTORIC SIGNIFICANCE:

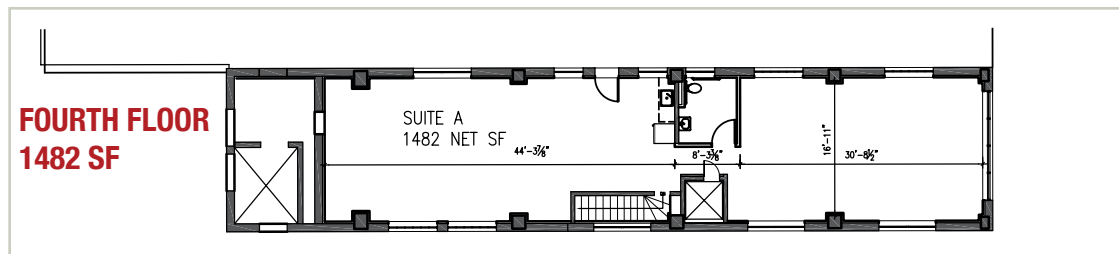
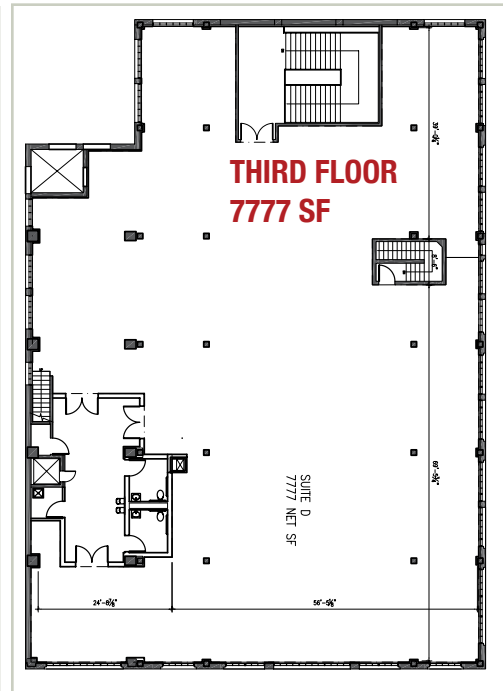
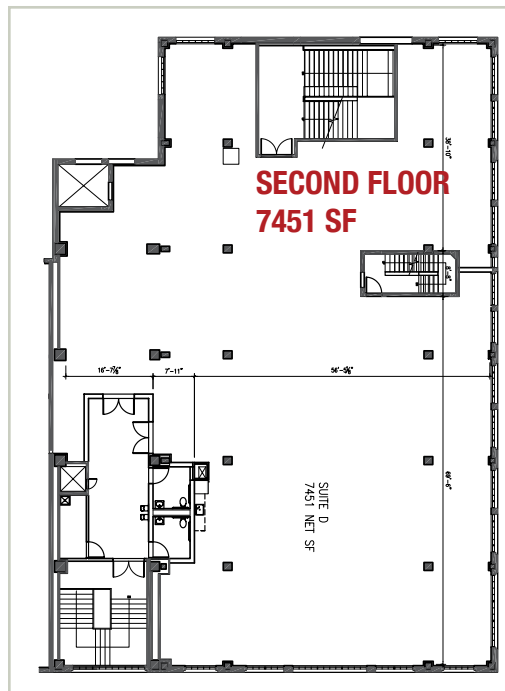
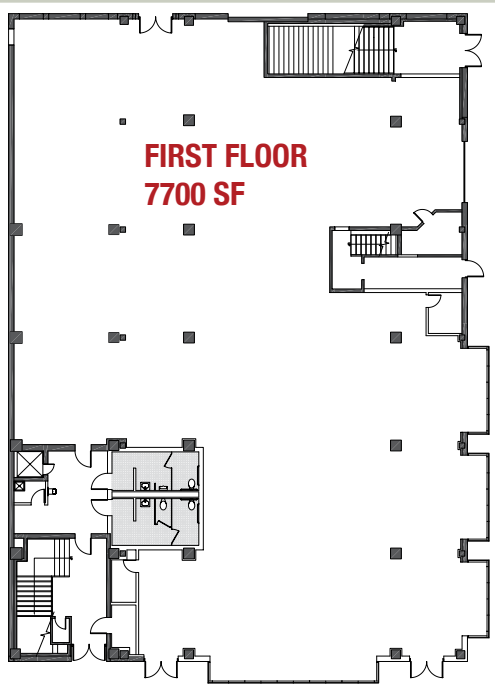
This large building at the corner of Fourteenth and T Streets, NW, was built in 1919 for the R.L. Taylor and H. Herbert Smith Ford car dealership. With 65 employees, the company switched allegiance and began selling Chevrolets in 1926. In more recent years the building served as a church facility.

During its many manifestations from Victorian era commercial strip to Washington's Automobile Row in the 1920s, 14th Street has continued as one of the City's most active commercial corridors.



DEMOGRAPHICS:

- Within a 5-mile radius the population is 639,217 with an unemployment rate of less than 6%.
- Within that same radius, there are 289,591 households with an average household income of over \$70,000.
- In a 1-mile radius, the median home sales price over the past six months as listed by Multiple Listing Service is over \$581,724.
- In this market area, consumers annually spend a combined \$5,413,000 on apparel, computer and accessories, entertainment, food, furnishings, television, radio & sound.
- The ages of this neighborhood demographic range from infant to senior citizen with over 65% in the 24 to 54 range.



BLAKE DICKSON
 Real Estate Services
 Wayne Dickson
 202.667.2000

**LISTING: 1840 14TH STREET,
 NW • Washington, DC**